

Avocent® ADX 4K IP KVM Adapter



Quick Installation Guide

NOTE: Vertiv™ Avocent® ADX 4K IP KVM adapter video cable connection options for DP, HDMI and MiniDP are available. In addition to the video cable, each adapter has a single USB Type A cable for keyboard/mouse control and to provide power to the adapter.

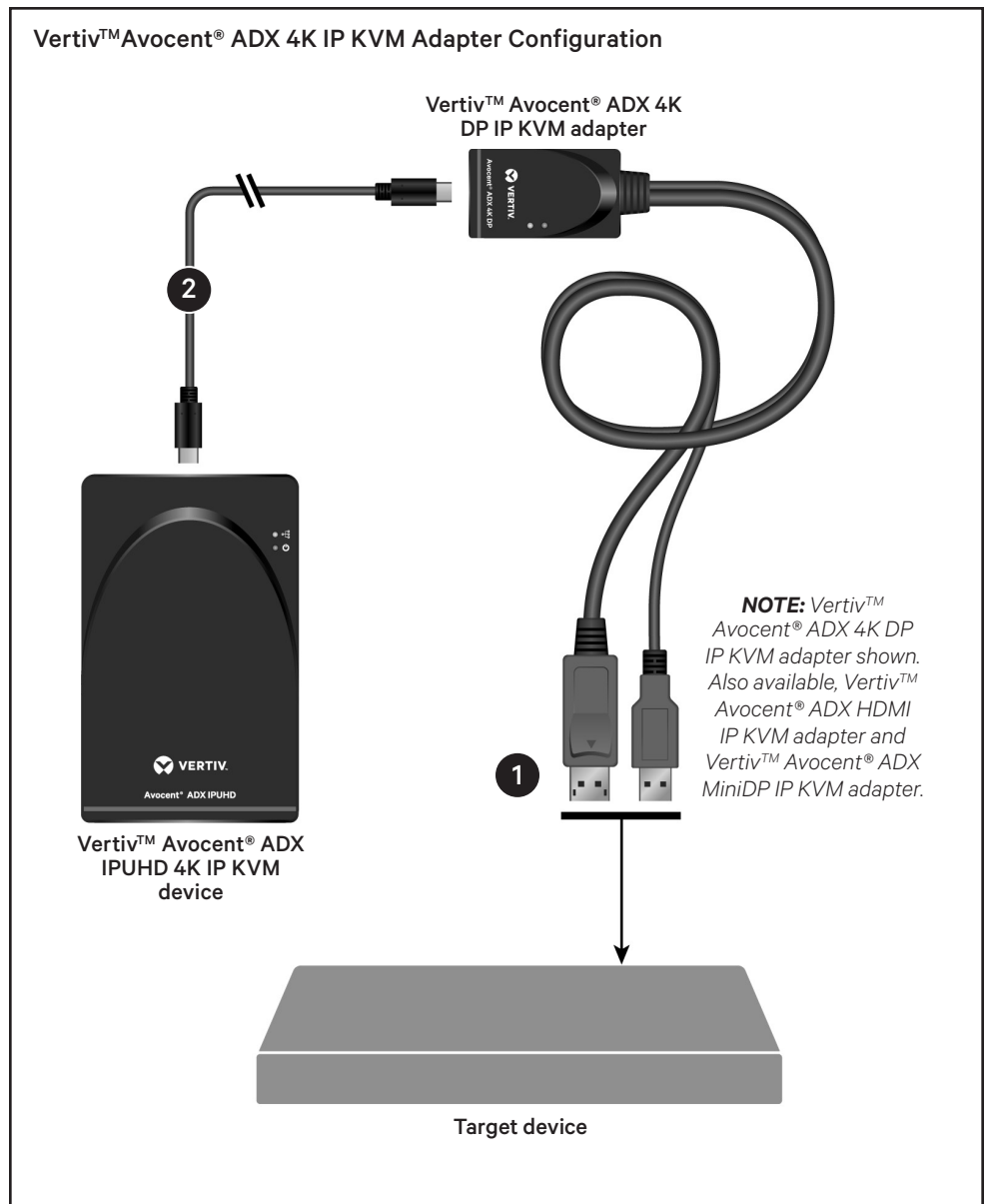
1. Connecting the adapter to the target device

Plug the adapter's video connector and keyboard/mouse USB connector into the appropriate ports on the target device.

2. Connecting to the Vertiv™ Avocent® ADX IPUHD 4K IP KVM device

Using the USB-C cable provided with the IPUHD, connect the USB-C port of the adapter to the USB-C port of the IPUHD.

The blue LED illuminates when the type C connection is successfully negotiated. The green power LED illuminates when the adapter is powered.





Hay disponible la versión traducida de este documento en www.vertiv.com/ADX-4K-IP-UHD-KVM.

To contact Vertiv Technical Support: visit www.Vertiv.com

© 2021 Vertiv Group Corp. All rights reserved. Vertiv™ and the Vertiv logo are trademarks or registered trademarks of Vertiv Group Corp. All other names and logos referred to are trade names, trademarks or registered trademarks of their respective owners. While every precaution has been taken to ensure accuracy and completeness here, Vertiv Group Corp. assumes no responsibility, and disclaims all liability, for damages resulting from use of this information or for any errors or omissions. Specifications, rebates and other promotional offers are subject to change at Vertiv's sole discretion upon notice.

